

# NetForce

## for Data Acquisition

AMTI's NetForce software is a complete data acquisition solution ideally suited to gather data from AMTI's multi-axis force platforms and multi-axis transducers.

NetForce can be setup to take data from a variety of AMTI's signal conditioning products. NetForce provides an Ethernet data interface, a RS-232 serial data interface, and also analog interfaces with Data Translation's DT3002 data acquisition cards

- Ideal for gait and balance acquisition
- Excellent for general purpose multi-axis transducer acquisition
- Exports data to BioAnalysis for gait and balance analysis, or as comma-delimited text for spread sheet or other custom analysis.
- Interfaces with DigiAmp, MiniAmp, AccuGait, or AccuSwayPLUS
- Supports up to 30 channels of analog data acquisition
- Continuous simultaneous real time display of up to 12 data channels and COP
- Extensive trial and subject information database
- Flexible acquisition capabilities
- Trigger options include channel level, key stroke, elapsed time, Ethernet connection, or external input
- English and metric units supported
- Simple hardware setup

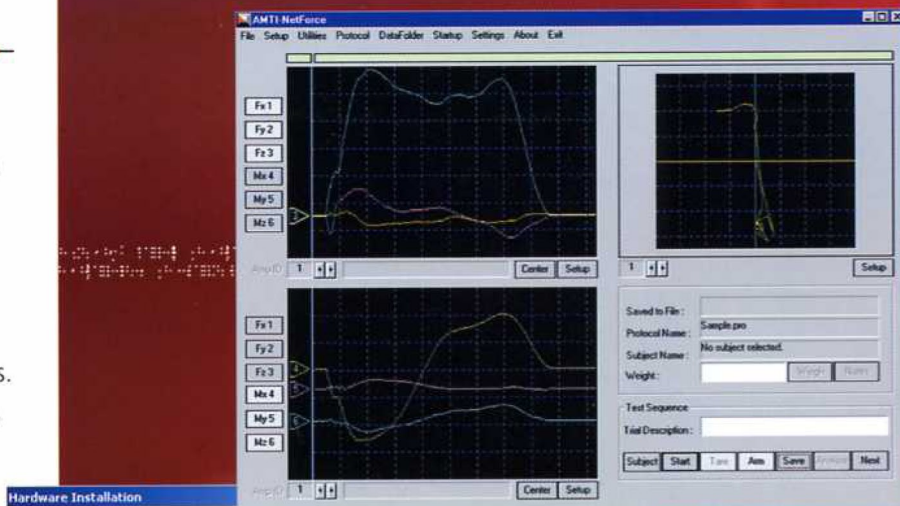
## Specifications

Processor . . . . . 400 MHz  
Memory . . . . . 128M RAM  
Operating Systems . . Windows 98/Me/2000/XP  
Hard Drive . . . . . 20 MB



ISO 9001:2000 certified

Tel: 617-926-6700 • Fax: 617-926-5045  
E-mail: sales@amtmail.com • www.AMTI.biz



Hardware Installation

Current Installation

PL	Model	SN#
1.	OR6-7-1000	1234
2.	OR6-6-1000	2345
3.	MC3A-6-250	M3456
4.	MC5-6-5000	M5678
5.		
6.		

Installation Type: MiniAmp Analog  
Modification Date: Wednesday, January 28, 2004  
Installed Platforms: 4

New Installation

<input type="checkbox"/> DigiAmp E-net	<input type="checkbox"/> MiniAmp Serial	<input type="checkbox"/> AccuGait	<input type="button" value="Restore"/>
<input type="checkbox"/> DT3002	<input type="checkbox"/> MiniAmp Analog	<input type="checkbox"/> AccuSway	<input type="button" value="Done"/>

Subject Management : C:\AMTINetForce

Subject selected for testing: Subject: Smith, Joe Protocol: Sample.pro

Trial selected for viewing: Trial: Type:Running Gait Data File: Trial00003

Last Name	First Name	Middle Name	Protocol	Trial Description	ID Number	Exam Date	Conditions	Trial Date
Smith	Joe		Sample.pro	Type:Running Gait		09/26/2003		
			Type:Running Gait	Type:Running Gait		09/26/2003		
			Type:Running Gait	Type:Running Gait		09/26/2003		
Isals	test		Sample.pro	Type:Running Gait		10/11/2003		09/26/2003
			Type:Running Gait	Type:Running Gait		01/28/2000		01/28/2000
			Type:Running Gait	Type:Running Gait		01/28/2000		01/28/2000
			Type:Running Gait	Type:Running Gait		01/28/2000		01/28/2000
Doe	Jane		Sample.pro	Type:Running Gait		10/22/2003		01/28/2000
			Type:Running Gait	Type:Running Gait		01/28/2000		01/28/2000
Doe	Jane		Standard.pro	Type:Running Gait		01/28/2004		01/28/2000
			Type:Running Gait	Type:Running Gait		01/28/2000		01/28/2000

Buttons: Add Record, Edit Record, Copy Record, Delete Record, Import Record, Data Folder, Query, Show All, Select, Cancel

AMTI, 176 Waltham Street, Watertown, MA 02472-4800 | 1-800-422-AMTI  
Tel: 617-926-6700 | Fax: 617-926-5045 | www.amtiweb.com | sales@amtmail.com